



# HURRICANE PREPAREDNESS

## EVERYTHING YOU NEED TO KNOW

Hurricane season begins June 1 and continues until November 30. The peak of the season is typically between mid-August to late October, when hurricanes are often most active and dangerous.

### HOW TO MONITOR POTENTIAL STORMS

The National Hurricane Center provides the most up-to-date information on storms as they develop out at sea:  
[nhc.noaa.gov](https://nhc.noaa.gov)



### EMERGENCY TEXT ALERTS

LSU provides an Emergency Text Messaging System to allow anyone in the LSU community to receive alerts, news, or other emergency information. Sign up at [myLSU > Campus Community > Emergency Text Message](#)

Baton Rouge has its own alert system called Red Stick Ready, which will send out text alerts from the city. Sign up at <https://www.brla.gov/list.aspx>

### BE SURE TO KEEP YOUR DOCUMENTS SAFE!

Make sure all immigration documents, including your passport, student visa, and I-20 or DS-2019, are in a safe location where you can access them if a hurricane affects your area. Secure your documents in a waterproof bag and keep them with you at all times.



### BEFORE THE STORM



- Ensure your disaster supply kit is stocked (see attached checklist)
- Move any outdoor items (i.e., bicycle, plants, etc.) inside
- Inform family & friends of your plan (especially if you are evacuating) and remind them that Wi-Fi/cell reception may be out after the storm
- Refill necessary prescriptions
- Charge all electronic devices
- Fuel your vehicle and/or generator

### DURING THE STORM

- Stay indoors & do not travel during the storm
- If winds become strong, stay away from doors & windows (take refuge in an interior room, closet, or hallway)
- Do NOT use candles, which can increase risk of a fire
- Understand that emergency services may not be able to respond during the storm



### AFTER THE STORM

Only leave your home if it is absolutely necessary. Stay away from downed powerlines & flooded areas.

Power & water can be out for a few days, so you will need your supply kit. If you live on campus, LSU will deliver emergency food kits to the dormitories if the dining halls are closed.

As soon as you have a signal, check in with your family & friends.

LSU provides an Emergency Support Fund for any student who is in need of financial assistance for an immediate, essential expense due to an emergency situation.

These funds are limited & can only be applied once. To apply, visit: [www.lsu.edu/family/association/emergencyfund.php](http://www.lsu.edu/family/association/emergencyfund.php)





# DISASTER SUPPLY KIT

## WHAT YOU NEED FOR A HURRICANE

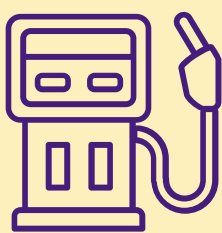


### WATER

Minimum guidance is 1 gallon per day, per person with half for drinking and half for sanitation. Before the storm, fill large containers (i.e., clean bottles) with water for drinking and cooking, and fill the bathtub for cleaning and flushing.

### SHELF-STABLE FOOD

Store food that does not require refrigeration or preparation, such as canned goods or shelf-stable meals. Keep a manual can opener on hand to open your canned food.

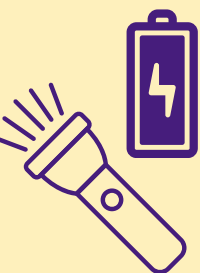


### GAS

Gas can be very hard to come by before and after a storm. Be sure to have a full tank of gas in your car and additional cans of gas if you have a generator.

### BATTERY-POWERED RADIO

It is important to monitor local media, and a battery-powered radio can be used when electrical service is out. (Some even come with cell phone charging attachments.)



### FLASHLIGHT & BATTERIES

Have a flashlight in case the power goes out, and always keep extra batteries on hand in order to power your radio, flashlight, and other supplies in the event you lose power. Some power outages can last for days, even after the storm has passed.

### FIRST-AID SUPPLIES

Check your supply of non-prescription pain relievers, band-aids, antibacterial ointment, insect repellent, sunscreen, and other first-aid items.

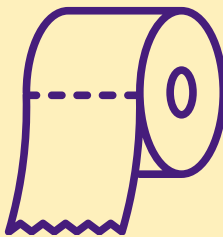


### SPECIAL NEEDS ITEMS

Be sure to stock up on your special needs supplies, including prescription medication, infant formula, or anything else you or your family may need.

### TOILETRIES & HYGIENE ITEMS

Store extra hygiene items, including feminine hygiene products, hand sanitizer, and toilet paper.



### CASH

With power outages, some stores may not be able to take credit/debit cards or other forms of electronic payment. ATMs will likely not work during a power outage as well. Always have some cash on hand.

### PET CARE ITEMS

If you have any pets, be sure to have emergency supplies for them as well.



## Important Numbers: 911 (for immediate emergencies)

LSU Police Department  
(225) 578-3231

East Baton Rouge Parish Sheriff's Office  
(225) 754-8500

If you experience financial hardship following a hurricane, look into [LSU's Emergency Support Fund](#) for a one-time, limited emergency grant.

Campus Crisis Information  
(225) 578-4636

Baton Rouge Police Department  
(225) 389-2000